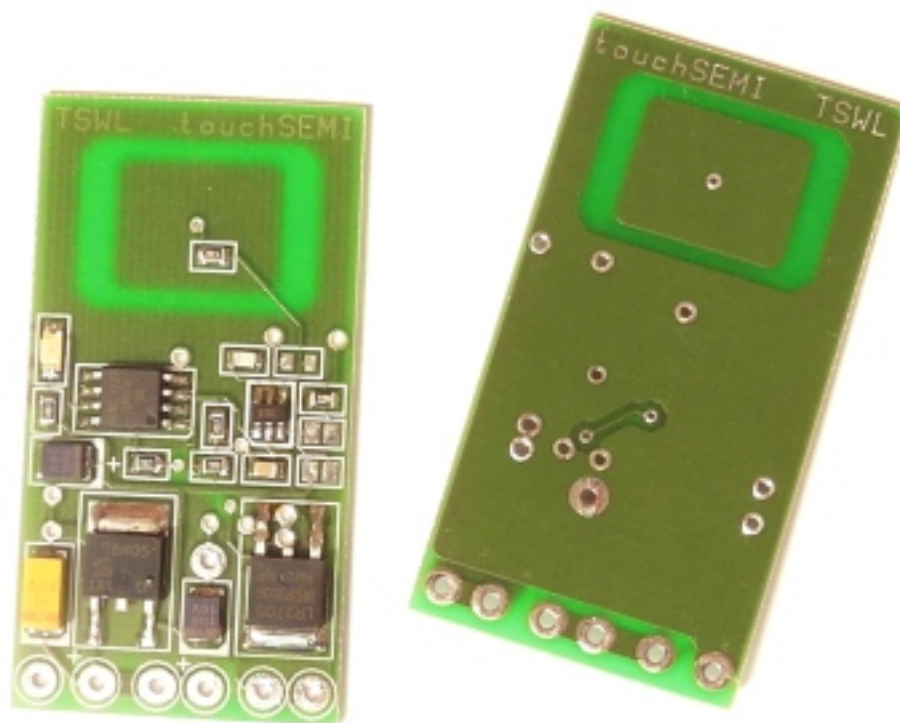


# TSWL

Universal touch controlled switch for LED or bulb lamps



*Let your lamps brings light of love  
to people :-)*

***touchSEMI***

[www.touchsemi.com](http://www.touchsemi.com)

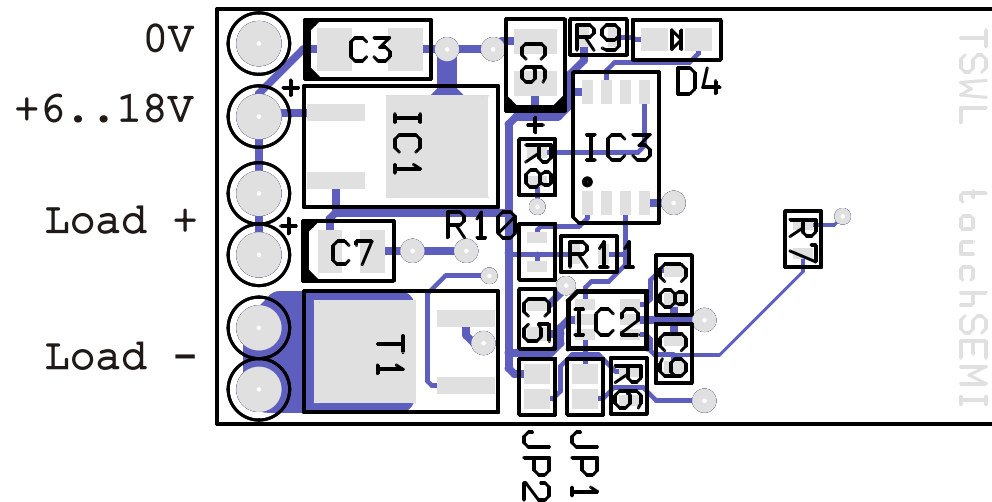
Tel.: (+420) 212247491

Fax: (+420) 212247466

Na mokrine 45, 13000 Praha 3  
Czech Republic, EU

# TSWL

## Universal touch controlled switch for LED or bulb lamps



### Technical data

- Input DC voltage: 6..18V
- Max. load: 30W
- Auto-off past 8 hours
- Soft On/ Off
- Capacitive touch control
- Sensitivity: up to 6mm (depends on material between board and finger)
- Short JP2 to lower sensitivity  
OR short JP1 to set lowest sensitivity  
*Avoid shorting both JP1 and JP2!*
- Press touch pad shortly to switch lamp On/ Off
- Press touch pad longer when lamp lit to adjust brightness.  
When brightness is set, remove finger from touch pad to store new value.

### Important information

- ⚡ Keep input voltage and load wattage in range
- ⚡ Check polarity before connecting input voltage
- ⚡ Check load polarity
- ⚡ Keep touch pad free of near metallic objects (decrease sensitivity)

**This product can be installed only by authorized person!**

**Manufacturer is not responsible for any damages or personal injury.**